

# mody

## MLS SERIES - HI CHROME SLURRY & SAND SUBMERSIBLE PUMP

### MLS SERIES

#### ELECTRIC SUBMERSIBLE SLURRY & SAND PUMP - 28% HI-CHROME DESIGNED FOR PORTABLE AND ABRASIVE APPLICATIONS

Model	Discharge (inches)	HP	RPM	Max Amps 460v-60Hz	Solids (inches)	Weight (lbs.)
MLS3-5	3	5	1800	8.4	1.2	262
MLS4-8	4	8	1800	11.4	1.2	332
MLS6-12	6	12	1800	16.1	1.2	403
MLS8-20	8	20	1800	24.9	1.2	612
MLS8-30	8	30	1800	34.7	1.2	955



#### MATERIALS OF CONSTRUCTION AND ENGINEERING DATA

##### PUMP END

pH Range	5 - 12
Impeller Type	Semi-Open
Max. Temperature of Pumped Fluid:	104°F/40°C
Max. Starts/Stop Per Hour:	15
Max. Submergence:	65 Feet

##### MOTOR

4-pole induction **continuous rated** motor with squirrel cage rotor. Automatic ON/OFF/ON Thermal Overloads in Motor.(5-12HP) Stator insulation class 'F' (155°C), 1.15 Service Factor.

##### POWER SUPPLY

3 phase, 60 Hz, AC Supply, 208, 230,460,575. Other voltages available upon request.

##### BALL BEARINGS

The rotor shaft is carried in two ball bearings. Double row contact lower bearing is capable of carrying high thrust and radial loads. Upper bearing is a deep groove single row oversized bearing. The bearings are enclosed with high temperature grease-containing special Anti-corrosion additive.

##### POWER CABLE

Waterproof/oil proof, rubber-insulated, neoprene-sheathed copper conductor flexible cable, 50 ft. (15m) length standard. Type SOOW in North America, EPR in the Middle East and HO7RN in the EU.

##### SHAFT SEALS

Double Mechanical Seals, outer and inner are Silicon Carbide, both rotating and stationary faces.

##### HYDRAULICS

Multi Vane, Semi-Open Impellers to effectively handle abrasive media.

##### COOLING

Top discharge ensures that the pump is cooled by the pumped liquid allowing the pump to operate even if not completely submerged.

##### MATERIALS OF CONSTRUCTION

Pump Casing:	ASTMA-48
Stator Casing:	ASTMA-48
Impeller:	28% Hi-Chrome Iron
Wear Plate:	28% Hi-Chrome Iron
Agitator	28% Hi-Chrome Iron
Shaft:	403 Stainless Steel
Hardware:	304 Stainless Steel
"O" Rings:	Nitrile Rubber
Mech. Seals:	SC/SC (Upper & Lower)

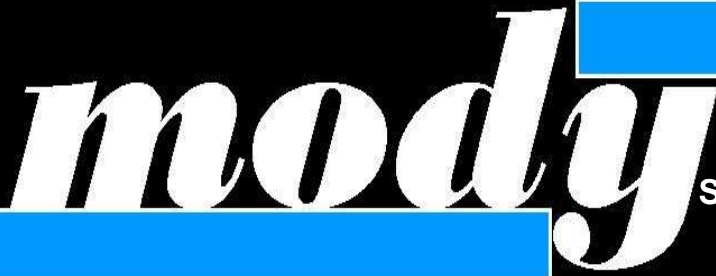
##### SURFACE TREATMENT

Primer with Epoxy paint



#### Mody Pumps® Inc.

2166 Zeus Court, Bakersfield, CA 93308. USA  
Tel.: (661) 392-7600 • Fax: (661) 392-7601  
<http://www.modypump.com>  
E-mail: [sales@modypump.com](mailto:sales@modypump.com)



**MLS SERIES - HI CHROME  
SLURRY & SAND SUBMERSIBLE PUMP**

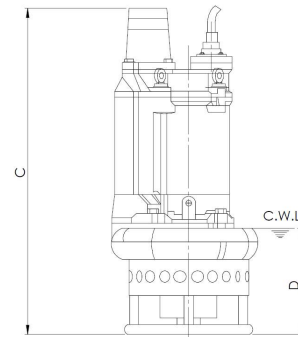
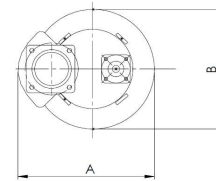
## MLS Series

### Portable Wet Pit Installation

**DIMENSIONS CHART (inches)**

MODEL	A	B	C	D *
MLS3-5	13.8	12.8	32.2	9.9
MLS4-8	16.4	14.7	33.3	9.9
MLS6-12	17.1	16.0	35.0	9.9
MLS8-20	19.1	18.0	44.2	9.9
MLS8-30	22.8	20.8	49.0	9.9

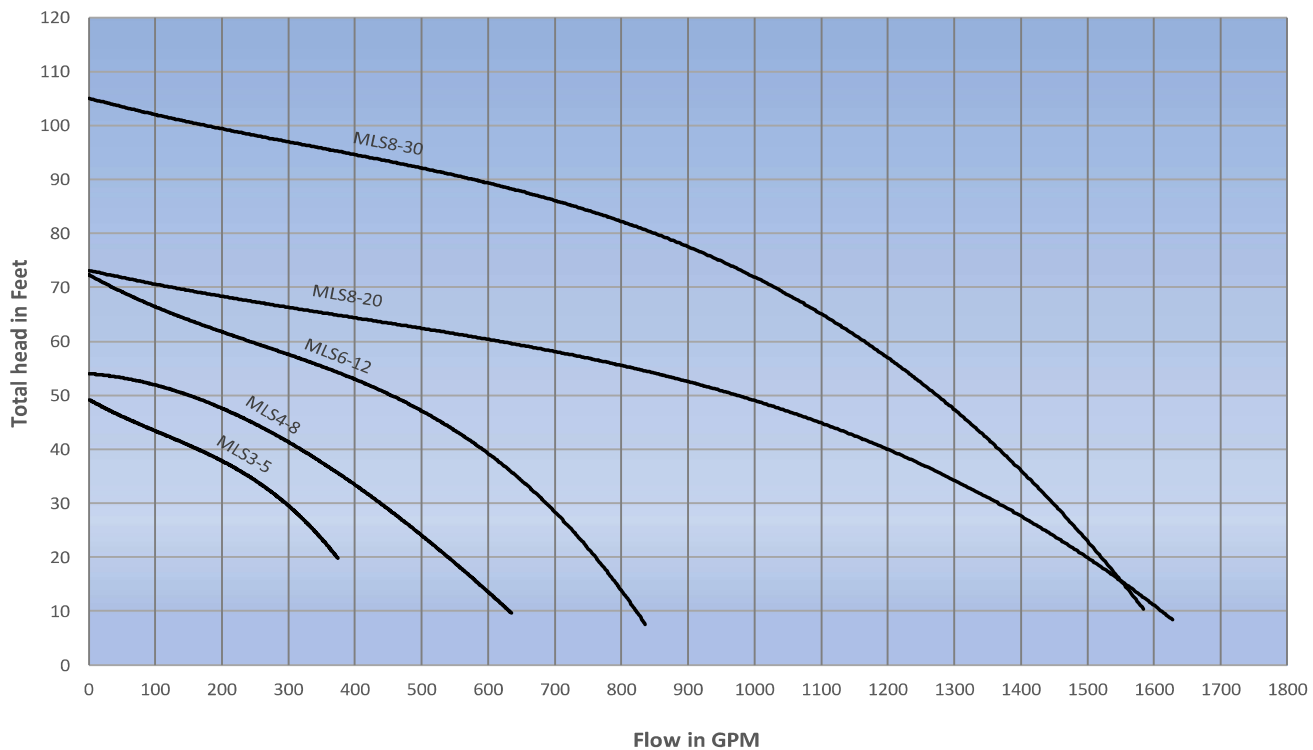
\* Lowest Water Level for effective suction



### PERFORMANCE CURVES

Performance Curve based on Clean Water at 68° F with 1.0 SG.

### MODY MLS SERIES



Due to continuous product development, specifications are subject to change without notice. Vol. 1, Rev. 1, Nov. 2018